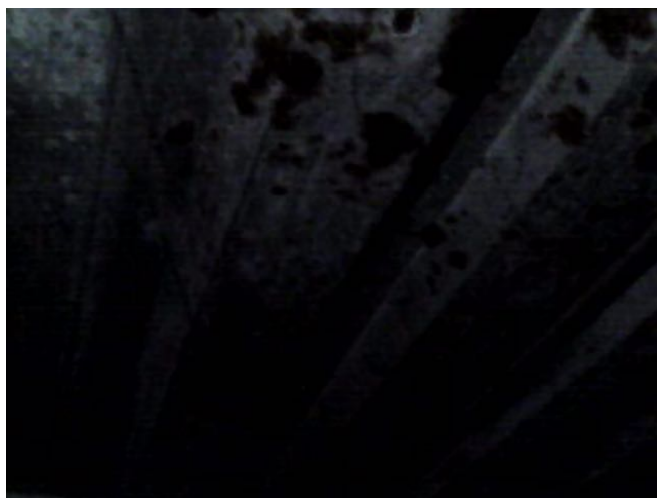
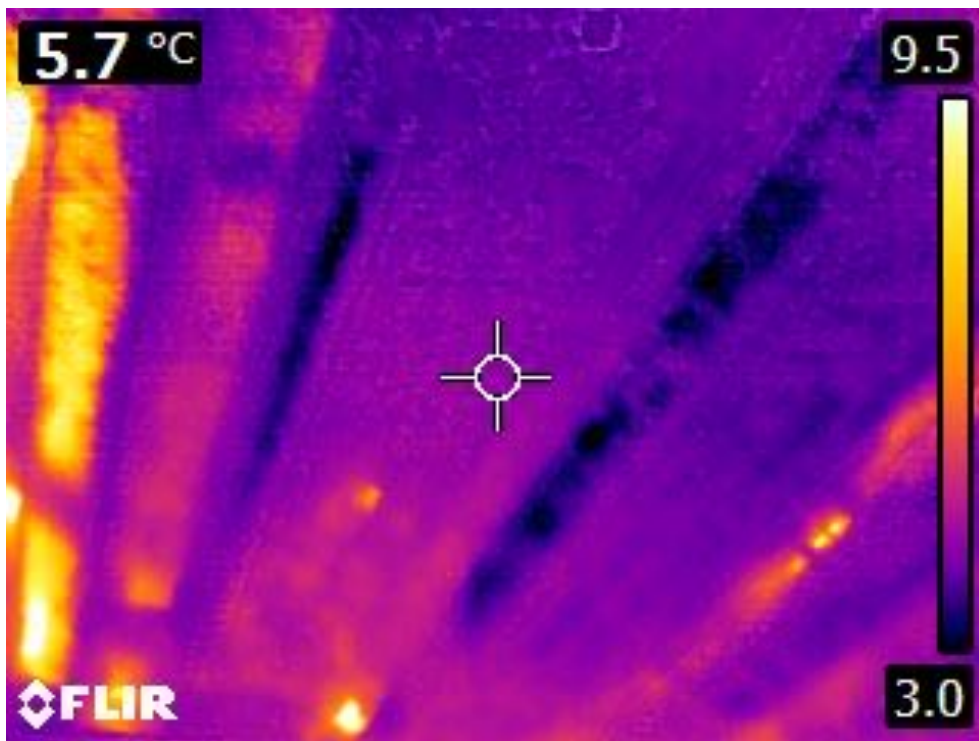




PDF document



#### TEMPERATUREN

**Punt 1** 5,7 °C

#### PARAMETERS

<b>Emissiegraad</b>	0,95
<b>Afstand</b>	1 m
<b>Gereflecteerde temperatuur</b>	20 °C
<b>Relatieve luchtvochtigheid</b>	50 %
<b>Atmosferische temperatuur</b>	20 °C
<b>Atmospheric Transmission</b>	0,99
<b>External Optics Temperature</b>	20 °C
<b>External Optics Transmission</b>	1